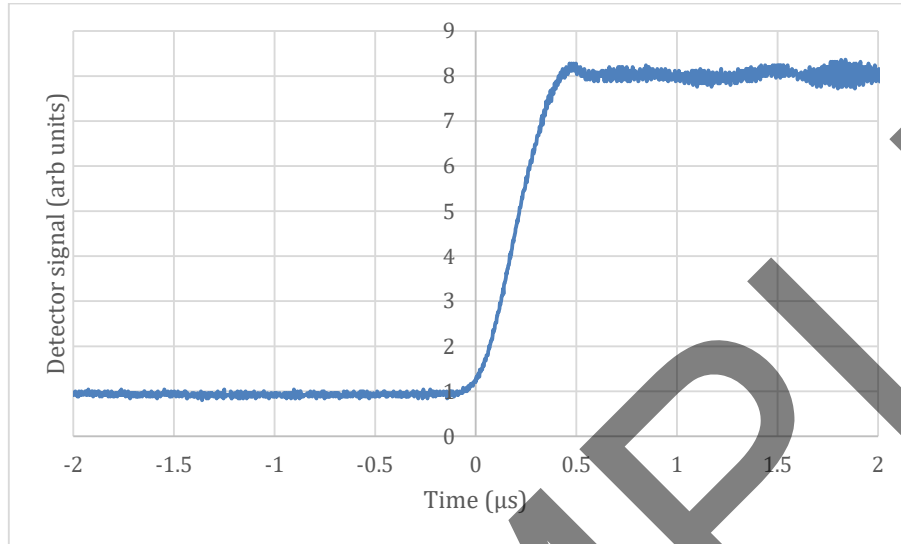
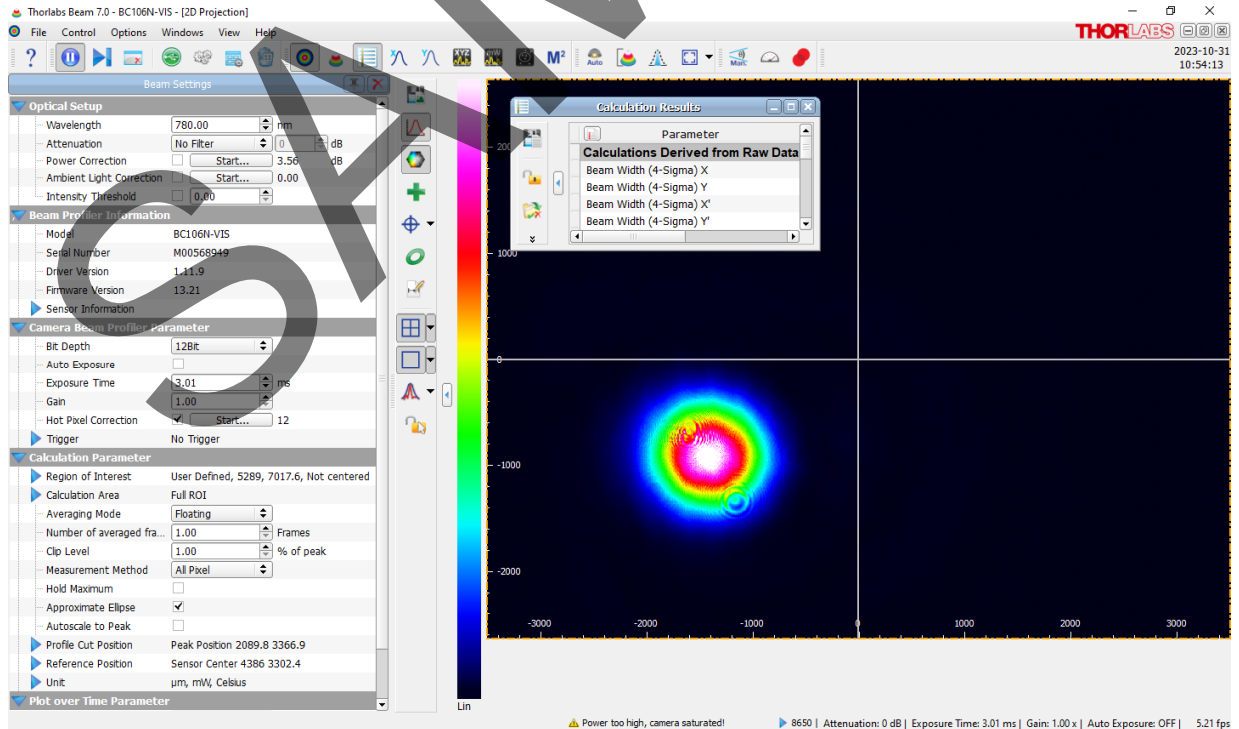


Measured offset voltage at 780nm	Measured $\lambda/2$ voltage at 780nm	Measured %T at 780nm	Measured extinction ratio at 780nm
128V	370V	94.6%	729:1

Pockels cell was measured using a LPVIS100-MP2 as the generating polarizer. Analyzer was the Glan Laser included with the PCT900. Beam diameter was 1.0mm (at 99% points). Rise time measured at 1 kHz



Beam profile generated with Thorlabs BCN106-VIS, with cell adjusted for maximum transmission.



Test Date:	October 26, 2023	Laser Source:	Thorlabs S1FC780
Operator:	MG	Test Wavelength:	780 nm + 15 nm/-5 nm
		Driver:	Thorlabs PCD1K
		Detector:	Thorlabs S120FC and PM100D
		High speed detector:	Thorlabs PDA10A
		Oscilloscope:	Tektronix TDS2024C

SAMPLE

---

43 Sparta Avenue • Newton, NJ 07860  
Sales: (973) 300-3000 • Fax: (973) 300-3600 • [www.thorlabs.com](http://www.thorlabs.com)